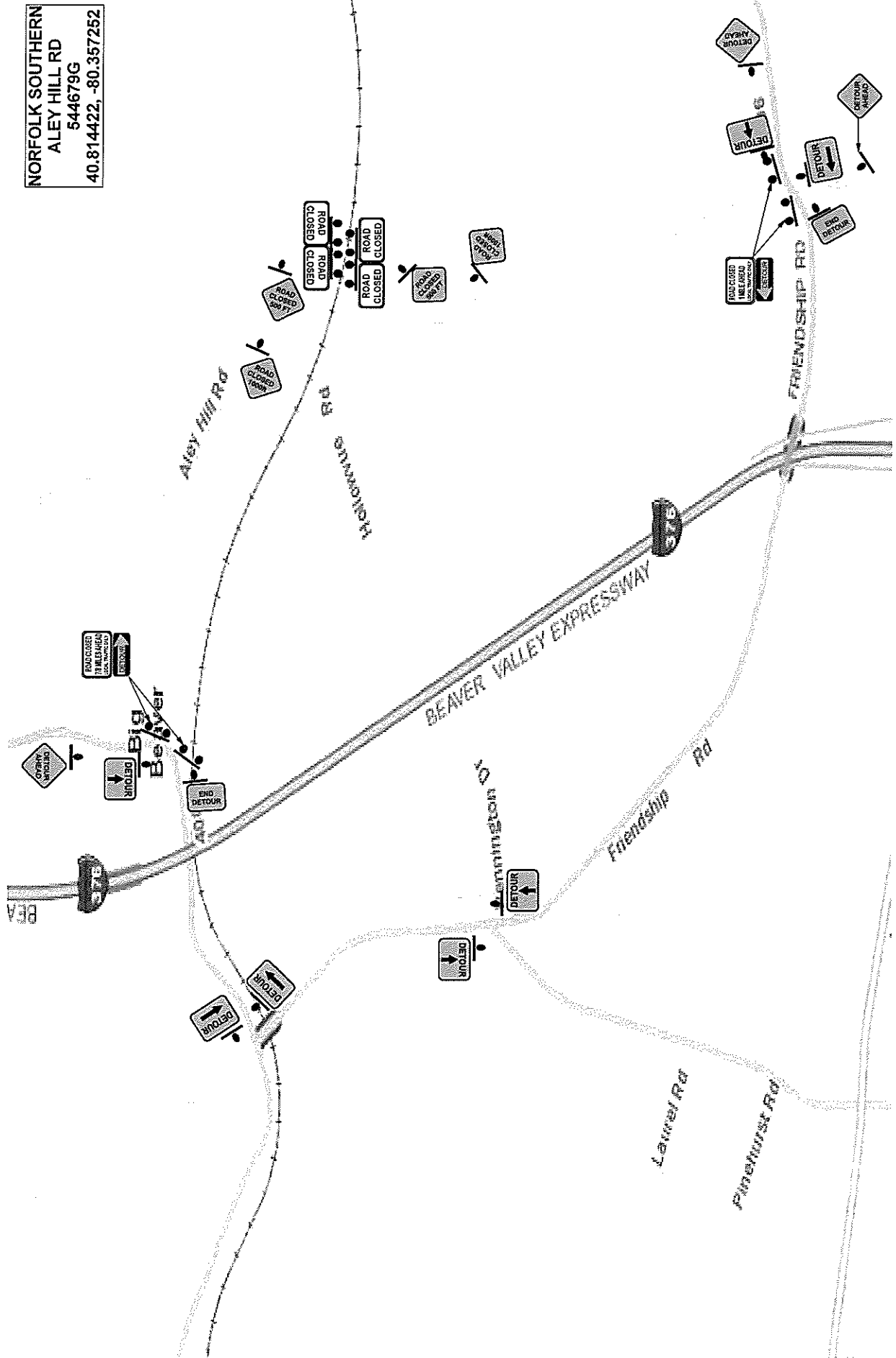


September 5, 2019

We have been contacted by Norfolk Southern about some upcoming road closures that will impact our community. The first closure is slated to begin on **Wednesday 9-11-19 and will remain closed through Friday 9-13-19 (Midvale Road)**. The second closure will occur beginning **Monday 9-16-19 and will remain closed through Wednesday 9-18-19 (Aley Hill Road)**. The third closure will occur beginning **Wednesday 9-18-19 and will remain closed through Friday 9-20-19 (McKinley Road)**. These dates are tentative and subject to change as the crew progresses through the work.

The closures are necessary for Norfolk Southern to perform maintenance work on the crossings. During this time, no vehicles will be permitted to pass through the closures.

NORFOLK SOUTHERN
ALEY HILL RD
544679G
40.814422, -80.357252



NORFOLK SOUTHERN
McKinley Rd
544684D
40.817405, -80.390358

Beaver Brook

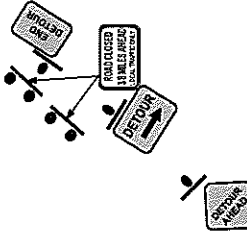
Big
Beaver

SEMANCO RD

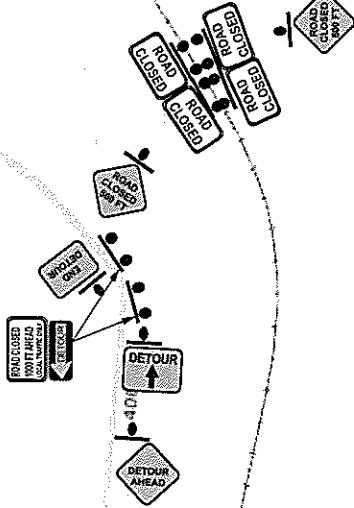


Park Ln

Big Beaver
Borough
Community Park



Grandview Dr



NORFOLK SOUTHERN
MIDVALE RD
544685K
40.818488, -80.337959

Pinkerton Ln

